

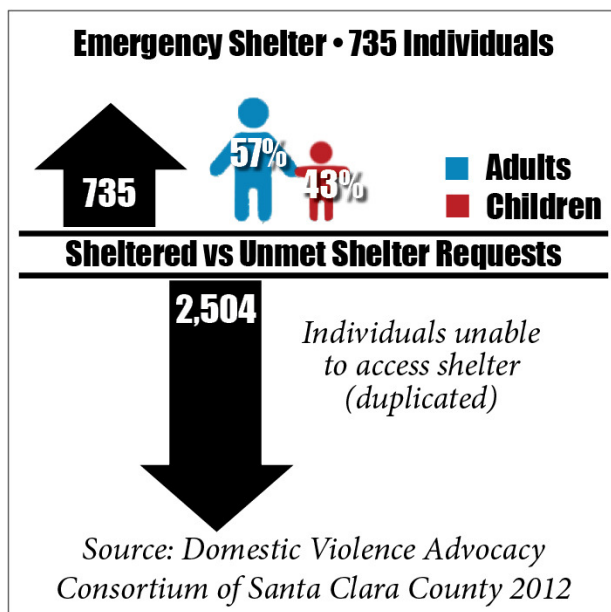


# SANTA CLARA COUNTY DOMESTIC VIOLENCE DATA REPORT

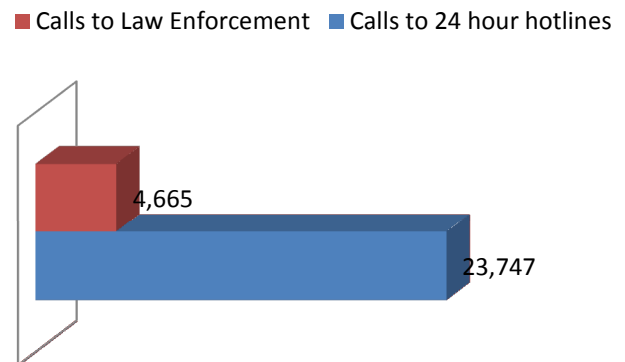
SANTA CLARA COUNTY  
Domestic Violence Council *Domestic Violence Advocacy Consortium Santa Clara County*

In FY 11-12, the nonprofit domestic violence victim service providers in Santa Clara County served the following number of individuals per program area:<sup>i</sup>

- Emergency shelter and transitional housing was accessed by **755** victims and children with over **20,000** bed nights provided
- **2,504** individuals were unable to access shelter because the domestic violence shelters were full (duplicated)
- **23,747** hotline calls answered
- Advocacy services including legal advocacy provided to **1,652** survivors with **12,249** advocacy sessions.
- **3,679** victims provided with peer counseling (individual and group) totaling **15,691** counseling sessions.
- **404** survivors received clinical therapy with **2,430** sessions provided.
- **421** children received counseling services (individual and group) totaling **3,678** sessions.
- **3,880** individuals received domestic violence training and education at **170** training and community awareness events.



There were **4,665** calls to local law enforcement in 2011<sup>ii</sup>. The rate of domestic violence-related calls to local law enforcement per 1,000 people declined slightly from 4 in 2000 to 3 in 2009.<sup>iii</sup>



Source: Morgan Hill Police Department, 2012; Domestic Violence Advocacy Consortium of Santa Clara County, 2012.

The District Attorney's Office reviewed **3,939** domestic violence related cases filed by law enforcement in 2012 and issued **2,259** complaints (**1,849** misdemeanors and **410** felonies). The Santa Clara County Superior Court Criminal Division issued protective orders in each of these cases. The Santa Clara County Superior Court Family Division issued **1,996** restraining orders in domestic violence cases in 2012.<sup>iv</sup>

The 2011 Santa Clara County Homeless Census and Survey listed the following point-in-time count conducted on January 25 and 26, 2011:<sup>v</sup>

- **10%** percent of respondents who were experiencing domestic/family violence or abuse increased slightly from 9% in 2009.
- **15%** of the female homeless population reported experiencing domestic violence, and **6%** of those were living with at least one child under the age of 18.
- **8%** of the male homeless population reported experiencing domestic/partner violence.
- Of all respondents experiencing domestic violence or abuse **15%** reported domestic violence as the primary cause of their homelessness.



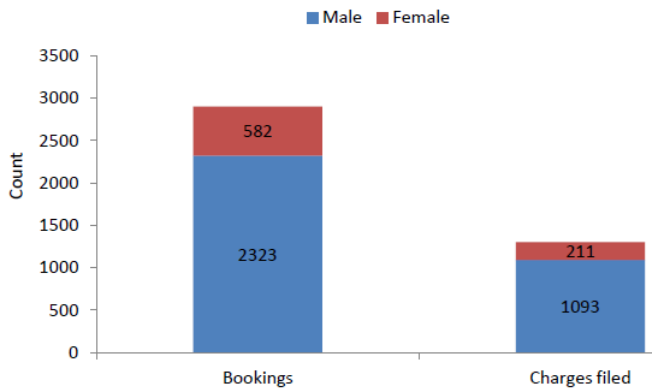
# SANTA CLARA COUNTY DOMESTIC VIOLENCE DATA REPORT

SANTA CLARA COUNTY  
Domestic Violence Council *Domestic Violence Advocacy Consortium* Santa Clara County

In fiscal year 2011, there were **2,905** bookings for domestic violence-related assault and battery, and **1,304** charges were subsequently filed. Males accounted for over 80% of the bookings and charges filed.<sup>iii</sup>

The police departments of San Jose and Santa Clara were involved in the greatest number of domestic violence-related deaths from 2000 to 2010. There were 144 domestic violence related deaths in the County from 2000-2012.<sup>iii</sup>

Number of Domestic Violence-related Adult Assault and Battery Bookings and Charges Filed by Gender, Fiscal Year 2011



Source: Santa Clara County Information Services Dept., FY 2011.  
(Note: Penal codes used to define domestic violence related assault and battery includes misdemeanor [PC242/243(E), PC 242/243(E)(1), PC 243(E), PC 243(E)(1), PC 273.5, PC 273.5(A), and PC 273.5(E)] and felony [PC 273.5, PC 273.5(A), PC 273.5(E)]. Counts are duplicated for adult suspects.)

The County had **nine** domestic violence related deaths in 2012. Three of the 9 cases included a domestic violence suspect who committed suicide. This is a decrease from the **17** domestic violence related deaths in 2011, which was the largest number of deaths in Santa Clara County since 2003.<sup>iii</sup>

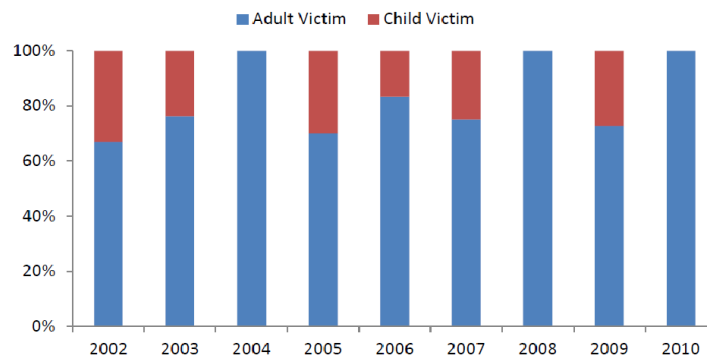
In 2002, the Death Review Committee began to collect the number of child homicide victims. From 2002-2010, **23%** of domestic violence-related homicides in Santa Clara County were children, representing a loss of **19** children. A total of **59** children were present at the time of these incidents.<sup>iii</sup>

Number of Domestic Violence Deaths by Police Agency Involved, 2000-2010

Police Agencies Involved	Deaths
Campbell Police Dept.	1
Gilroy Police Dept.	5
Los Altos Police Dept.	1
Los Gatos-Monte Sereno Police Dept.	2
Milpitas Police Dept.	5
Morgan Hill Police Dept.	2
Mountain View Police Dept.	5
Palo Alto Police Dept.	3
San Jose Police Dept.	60
Santa Clara Police Dept.	21
Sunnyvale Dept. of Public Safety	2
Santa Clara County Sherriff's Dept.	10
Dept. of Corrections	1

Source: Santa Clara County Domestic Violence Council, Domestic Violence Death Review Committee, 2000-2010.

Percentage of Adult and Child Victims of Domestic Violence-Related Deaths, 2002-2010



Source: Santa Clara County Domestic Violence Council, Domestic Violence Death Review Committee, 2002-2010

<sup>i</sup> Domestic Violence Advocacy Consortium of Santa Clara County, 2012.

<sup>ii</sup> Morgan Hill Police Department, 2012.

<sup>iii</sup> Santa Clara County Public Health Department, *Santa Clara County Violence Profile 2012*. June 2012.

<sup>iv</sup> Santa Clara County Domestic Violence Council, Domestic Violence Death Review Committee, *Annual Report Jan 1 – Dec 31, 2012*.

<sup>v</sup> Applied Survey Research, *2011 Santa Clara County Homeless Census and Survey Comprehensive Report, 2011*.